



# TEAM PHOTO TIME/INFORMATION



**COACHES: FRIDAY:** The IESA requests teams to have their picture taken on Friday between **11 a.m. to the end of the last round of wrestling downstairs in the lower gym**. Every year we have upset parents because their team did not get its picture taken and they are not able to purchase State photo plaques on Saturday. The entire process typically takes 5- 20 minutes depending on the line. \* (call Ken w/ questions @ 309-678-6116).

**Please email this page to parents or make copies for them**

## PARENT ORDER FORM FOR STATE PHOTO PLAQUES

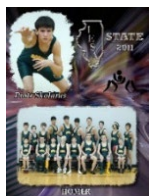
**\*INFORMATION:** We are taking all team and individual photos during the day on Friday. Photo plaques are available to purchase and take home Saturday in the concession area.

### TWO WAYS TO ORDER:

1. Complete this form (with credit card # on form) and have your wrestler or coach hand it to the photographer Friday during team pictures. Then pick up your completed order Saturday morning in the lobby.
2. Bring this completed form to our picture table in lobby Saturday between 8 a.m and 1 p.m. Then come back to pick up order (possibly 1 to 3 hours later). Extra forms will be available.

-----CUT HERE-----

### ORDER HERE



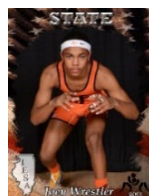
#### INDIVIDUAL/TEAM PHOTO PLAQUES

**Regular size** (6x8 photo on plaque) Qty: \_\_\_\_ @ \$40 each for a total of \$ \_\_\_\_

Add-on 6x8 "photo only" for \$15. Qty: \_\_\_\_ for a total of \$ \_\_\_\_

**Large size:** (8x10 photo on plaque) Qty: \_\_\_\_ @ \$50 each for total of \$ \_\_\_\_

Add-on 8x10 "photo only" for \$20. Qty: \_\_\_\_ for a total of \$ \_\_\_\_



#### INDIVIDUAL PHOTO PLAQUE

**Regular size** (6x8 photo on plaque) Qty: \_\_\_\_ @ \$40 each for a total of \$ \_\_\_\_

Add-on "6x8 photo only" for \$15. Qty: \_\_\_\_ for a total of \$ \_\_\_\_

**Large size:** (8x10 photo on plaque) Qty: \_\_\_\_ @ \$50 each for total \$ \_\_\_\_

Add-on 8x10 "photo only" for \$20. Qty: \_\_\_\_ for a total of \$ \_\_\_\_



#### TEAM PHOTO PLAQUES

**Regular size** (6x8 photo on plaque) Qty: \_\_\_\_ @ \$35 each for a total of \$ \_\_\_\_

Add-on 6x8 "photo only" for \$10. Qty: \_\_\_\_ for a total of \$ \_\_\_\_

**Large size** 8x10 photo on plaque): Qty: \_\_\_\_ @ \$45 each for total \$ \_\_\_\_

Add-on 8x10 "photo only" for \$15. Qty: \_\_\_\_ for a total of \$ \_\_\_\_

Wrestler Name (print) \_\_\_\_\_ Circle: **A** or **AA**

Town & School: \_\_\_\_\_ Parent Cell# \_\_\_\_\_

Circle: Cash or Credit Card. CC#: \_\_\_\_\_ Exp. \_\_\_\_\_ of \_\_\_\_\_ cvv: \_\_\_\_\_ Zip code \_\_\_\_\_

TOTAL PAID: \$ \_\_\_\_\_ Questions: 309-689-0299 or info@eventprophotography.net PIC #: